



AUREUM

The latest in designer finishes, Aureum becomes the focal point of an interior space, the soft golden glow combined with warm natural tones creates vibrant surfaces that are both visually stunning and pleasant to touch. Aureum is ideal for interior designers wanting to create a classical space with a contemporary feel.
www.oikos-paint.com

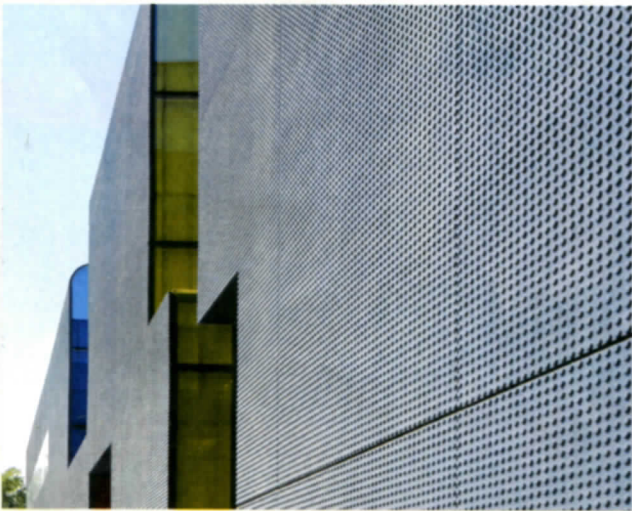
AXMINSTER

The recent refurbishment of the spectacular five-star Grange City Hotel has seen bespoke carpet from Axminster Carpets Commercial installed throughout the hotel. The carpet installed is constructed from a durable 80% wool 20% nylon Home Spun yarn on Axminster Commercial's famed Super 8 pitch looms for maximum durability, comfort and appearance retention.
www.axminster-contractcarpets.co.uk



PAPERBOY

The internal workings of animals, flying Spitfires, mythical beasts and a guide to hand animals define PaperBoy Interiors and its series of handmade wallpapers. Using FSC-accredited paper, drawn by Victoria Cramise and handmade in Norfolk, each PaperBoy design shows lavish attention to detail and comes on a 10m roll. Matching fabrics for all designs are available, along with co-ordinating plain colours.
www.paperboywallpaper.co.uk



ARMOURCOAT

Armourcoat will introduce Ductal® Ultra-High Performance Concrete at 100% Design London (stand D100). Developed by Lafarge, Ductal® presents a genuine revolution in the concrete sector. The material possesses a unique combination of superior properties including strength, ductility, durability and enhanced aesthetics. This enables designers to develop and realize new sculptural approaches to concrete forms. Armourcoat hold the first sublicense to manufacture Ductal® precast elements in the UK, and will concentrate development on lightweight decorative building façades.
Stand D100
www.armourcoat.com



ANTRON

Looking at four sets of opposites, Antron® carpet fibre's 'Carpet and Space' campaign attempts to identify differences and explore new opportunities in our space/carpet perception. 'Wild and Domesticated' explores our relationship with carpet, tracing its routes back to cave dwelling and how its soft fibrous quality marked our domestic environment.
www.antron.net